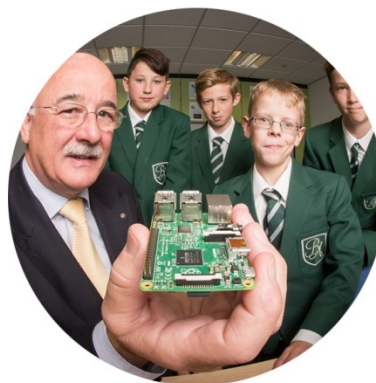


## Muckle LLP and Muckle LLP Grassroots funds Impact Report 2017



## The Muckle LLP Funds in 2016-17

Dear Hugh, Karen and all at Muckle.

Welcome to your annual impact report for 2016-17, a year in which, thanks to your combined generosity, effort and passion, the two funds made grants worth a total of more than £30,000 in support of activity that tackles disadvantage, strengthens communities, and makes our area a better place to live.



The 'main' Muckle LLP Fund continued to make grants based on the recommendations of your community panel, often supporting causes close to staff members' hearts and organisations where staff and family members volunteer. I know that the grants (of up to £250) that match the personal fundraising of staff members – running the Great North Run, for example – are particularly valued by the team. A list of all grants made from that fund in 2016-17 is included on pages 7-9 of this report.

The other fund that the firm has with us, the Muckle Grassroots Fund, is our opportunity to knit together your corporate philanthropy priorities, your staff's interest in and expertise on social issues, and the needs of the local community as expressed by applications to us. In 2016-17 the fund made £5,501 in grants in response to applications to the Community Foundation, with final decisions based on recommendations made by the community panel. The 2016-17 grants from the fund are detailed on page 9 and as you know the fund has already got off to a great start in 2017-18, making grants worth nearly £4,000 in support of activity in your doorstep in the West End of Newcastle.

I hope that the feedback, and in particular the thank you letters, included on page 10 onwards, give you an idea of the impact of your endeavours and, as importantly, the value felt by the community organisations and charities we've supported.

As ever, I look forward to continuing to work with you throughout 2017-18 and beyond, and wish to thank you once more for your recent additional donation into the 'main' fund. I know you are undertaking a review of the firm's CSR activities, so please do let me know if I can help in any way in terms of ensuring that the funds continue to meet the twin objectives of inspiring your workforce and supporting the needs of the community.

The next section of this report hopefully gives additional insight into the thought and research that goes into our analysis of community need and paints a picture of how our Vital Signs analyses have helped us identify emerging social needs and underfunded geographical areas. Fairness, healthy living, the local economy, and community buildings are particular priorities for us at present, as are 'cold spot' areas such as South East Northumberland, Sunderland and South Tyneside. I'd be happy to discuss with you how we can focus future grant-making to help us respond to these challenges whilst maximising staff involvement and 'fit' with your corporate objectives.

Overall, 2016-17 was another eventful year for the Community Foundation. Our Murray Match scheme was extremely popular, growing our endowment by attracting gifts of more than a million pounds. This created eight new funds and helped a further 32 funds to grow. There is still around 0.5m of match available, though we have pledges recorded against around half of that. Please do contact me if benefitting from this scheme in order to grow the fund is of interest to you.

We spent a lot of time thinking about strategy, growth, and how we 'tell our story' to potential donors and the wider public, and, as ever, we'd welcome your support in helping us do this. If someone you know is thinking about giving and philanthropy, and you feel that we can provide support then please help us to make that connection. Why not invite them to a Community Foundation event, or suggest a conversation with one of our staff?

Thank you so much once again for your continued support to the Community Foundation, and our region, in 2016-17. I look forward to doing much more in the future.

**Jon Goodwin**  
Senior Philanthropy Advisor

## VitalSigns

### The number of Community Foundations across the UK taking part in the Vital Signs initiative continues to grow, with nearly half now taking part.

The initiative is also spreading globally, with communities in Canada, Ireland, Brazil, the United States, Bermuda, Australia and New Zealand launching reports in October 2016. Being part of a truly global initiative is helping raise awareness of the important role played by Community Foundations with the support of local philanthropists. Here in the North East we have refreshed our Vital Signs reports for 2016 both in Tyne & Wear and Northumberland.

### Vital priorities for Tyne & Wear

Whilst philanthropy is about so much more than just tackling social problems, it is hard to ignore the hardship caused across Tyne & Wear by a combination of increased need and reductions in funding for services. Our donors may not be able to provide the resources needed to eradicate inequality, however they can transform individual lives. For example, by helping young people in poorer areas overcome the challenges they face. Vital Signs highlighted the example of Tyler Leech – now a student at University of York St John - whose time at the Kids Kabin project helped kick start her ambition to become an English teacher.

*In Tyne & Wear our analysis of local need identified two priority themes for giving: fairness and healthv livina.*

Improving health is a major challenge in Tyne & Wear, and one where Community Foundation grants can add considerable value to the work of health services. Whilst Tyne & Wear hosts leading centres of medical research, and there are signs of progress in areas like reducing circulatory disease, life expectancy here remains amongst the very lowest in England. We need to get upstream of this problem, by helping people to help themselves. Community groups have a key role to play, for example by using Community Foundation grants to encourage healthier lifestyles and offer positive alternatives to those at risk of drifting into drug and alcohol abuse.

### Vital priorities for Northumberland

Our 2016 Vital Signs report for Northumberland identified a number of specific priorities. The first of these was the vital role played by philanthropy in supporting community buildings, local voluntary projects and volunteering in the County. With this in mind, the Community Foundation was pleased to use some of its own unrestricted Vital Funds to give Community Action Northumberland the resources it needed to support community building management committees across the county in 2016-2017.

Vital Signs also spotlighted the challenges facing the Northumberland economy, which remains characterised by low wages and productivity. It asked whether we need to think about how philanthropy can support efforts to improve this situation. The amount of resources that the Community Foundation can apply to this purpose is modest, but we can hit above our weight. An example cited in the report was the work of the Platten Family Fund in schools to help inspire young people to become engineers.

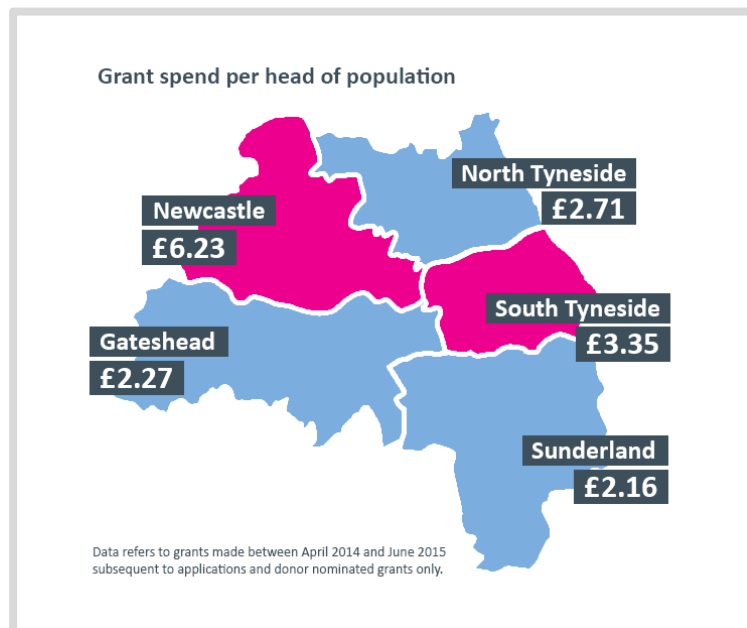
Finally, poverty in Northumberland was identified as a major issue. However, whilst acknowledging that much of this was centred in the South East of the county the report also flagged up the existence of hidden pockets of poverty and disadvantage in more prosperous areas. Sam Gilchrist of West Northumberland Foodbank used the report to highlight the importance of philanthropy in helping community groups tackle poverty at a local level.

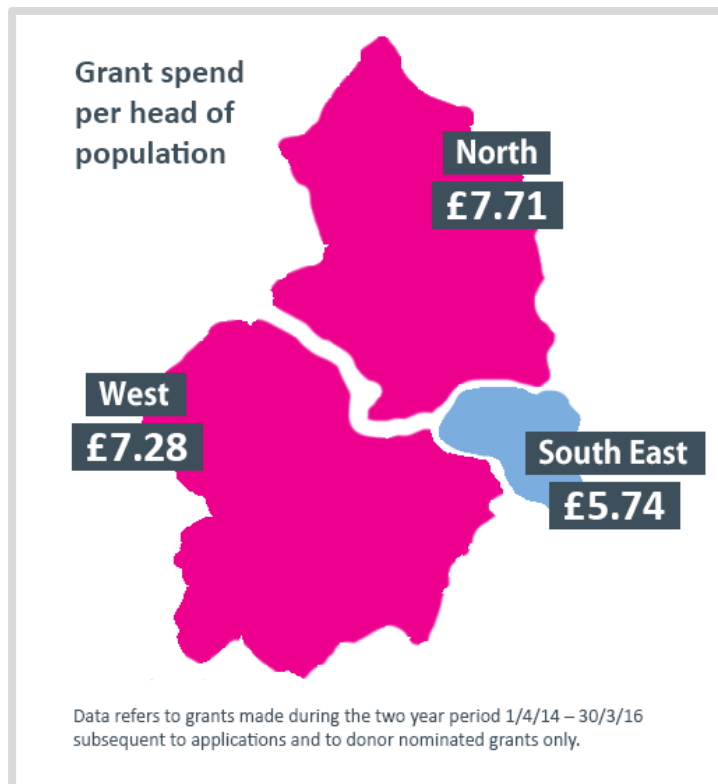
*Perhaps in Northumberland the Community Foundation has a role to play in addressing hidden pockets of deprivation.*

### Vital giving: hot and cold spots

Vital Signs highlighted many examples of grants that have achieved real impact within local communities, and also gave readers an opportunity to hear directly from donors such as Tony Platten, Richard Shears and Fiona Cruickshank about the thinking behind their giving.

However, it also highlighted the problem that Community Foundation giving is patchy across Tyne & Wear and Northumberland. Our two maps below show how the amount of money we spend on grants per head of population varies between areas, with cold spots where funding is lower than average shown in blue. In Tyne & Wear, for example, the maps show Sunderland receives considerably less funding than Newcastle. In Northumberland it is the South East that receives less funding per person than the West or North.





Vital Signs has highlighted the need for the Community Foundation to encourage more giving to local philanthropy “cold spots”, so that all residents have an equal opportunity to benefit from the generosity of its donors.

### What's next?

With generous support from the Esmée Fairbairn Foundation and Garfield Weston Foundation we have been asked to prepare Vital Signs reports in County Durham (in partnership with County Durham Community Foundation) and Teesside for October 2017. Once these are completed, there will be a Vital Signs resource for developing community philanthropy across the North East.

The next stage will be to make Vital Signs more engaging for our donors and grantees, focussing particularly on ways to use community knowledge to make philanthropy and giving more effective and rewarding. We hope that as a fund holder you will join us in the conversation.

**Mark Pierce**  
 Director of Community Knowledge and Funding

<b>Grants awarded – Muckle LLP Fund</b>	
<b>Gateshead Fell Cricket Club</b> Cutting cylinder units	<b>1,200.00</b>
<b>Success4All</b> Supporting two vulnerable young people for one year	<b>500.00</b>
<b>Tyneside Women's Health</b> Singing teacher and support worker	<b>949.40</b>
<b>If U Care Share</b> Contribution to running costs	<b>200.00</b>
<b>Lambton Street Youth Centre</b> Cycle repair scheme	<b>1,000.00</b>
<b>Middlesbrough &amp; Teesside Philanthropic Foundation</b> Contribution to running costs	<b>250.00</b>
<b>Eden Valley Hospice</b> Specialised children's bed	<b>1,188.00</b>
<b>Heel and Toe - NE</b> Match funding	<b>250.00</b>
<b>Heel and Toe - NE</b> Match funding	<b>250.00</b>
<b>International Newcastle</b> Towards the costs of one young person attending the Toronto Conference 2016	<b>1,500.00</b>
<b>Access to Justice Foundation</b> Match funding	<b>217.00</b>
<b>Percy Hedley Foundation</b> Contribution to running costs	<b>250.00</b>
<b>St Cuthbert's Care</b> Alan Shearer Centre Garden	<b>1,200.00</b>
<b>Bailiffgate Museum</b> Project 2 - work with children	<b>1,200.00</b>
<b>Prudhoe Youth Club F.C.</b> New kit and training/match fees	<b>504.00</b>
<b>Kells Lane Primary School</b> New furniture	<b>1,000.00</b>
<b>Northumberland Community Enterprise Ltd</b> Shelter for Bedlington allotment	<b>1,000.00</b>
<b>JET (Jobs Education and Training)</b> Decoration costs	<b>1,000.00</b>
<b>Success4All CIO</b> Electronic equipment and software	<b>854.00</b>
<b>Prudhoe West First School</b>	<b>1,200.00</b>

Energy efficient lighting	
<b>JET (Jobs Education and Training)</b> General Donation	500.00
<b>Reviving the Heart of the West End Ltd</b> General donation	500.00
<b>Bright Red</b> Match-funding	215.00
<b>Heel and Toe - NE</b> Match funding	250.00
<b>Friends of Darras Hall First School</b> Junior librarian scheme	1,000.00
<b>Bedlington Juniors Football Club</b> Under 7's equipment and kit	1,200.00
<b>8th Newcastle Girls Brigade</b> Equipment	500.00
<b>Bright Red</b> Contribution to running costs	250.00
<b>The Art Studio</b> New guillotine and mount cutter	700.00
<b>Calvert Trust Kielder</b> General Donation	85.00
<b>St Oswalds Hospice</b> General Donation	250.00
<b>The Stroke Association</b> General Donation	250.00
<b>Heel and Toe Children's Charity</b> Contribution to running costs	250.00
<b>Whitley Bay High School</b> Netball Dresses	360.00
<b>Ouseburn Farm Charity Limited</b> Contribution to running costs	1,000.00
<b>ISIS Arts</b> Community Audience Workshops	1,000.00
<b>Heel and Toe Children's Charity</b> Contribution to running costs	500.00
<b>Dementia Care</b> Accommodation costs	1,000.00
<b>Northern Stage (Theatrical Productions) Limited</b> Christmas Access Scheme	600.00
<b>National Association for Bikers with a Disability</b> Contribution to running costs	200.00



40 Grants

26,322.40

## Grants awarded from the Muckle LLP Grassroots Fund

<b>Cleadon Archers</b> Watching area and storage	<b>230.00</b>
<b>49th Newcastle Scout Group</b> Camping equipment	<b>480.00</b>
<b>Jarrow Bowling Club</b> Weather protection Jackets & Club Shirts	<b>1,041.00</b>
<b>Hindu Nari Sangh</b> Bollywood dance classes for young people	<b>1,500.00</b>
<b>Wor Hoose Community Project</b> wor hoose toddlers	<b>500.00</b>
<b>Pennywell Community Centre</b> Pennywell Community Centre's Electronic Village Hall	<b>1,750.00</b>

6 Grants

5,501.00

## Feedback on some previous grants

Angelus Luncheon Club	
Project:	A local summertime trip including a meal
Grant amount:	£500
Area of benefit:	Sunderland

Objectives – met
<b>Objective 1:</b> In September 2015, an outing to Washington Wildfowl and Wetland Centre will take place
Visible friendly social interaction during project. Lively chatter. Photographs taken.
<b>Objective 2:</b> 25 older people will attend
2 newly joined members came with the group ,were welcomed and contributed to the enjoyment.
<b>Objective 3:</b> Feedback from older people will be collated and reported back to the Community Foundation
Self esteem evident. Everyone was smart, most had been to the hairdressers and anticipated the day with great pleasure.

Effort to attend was also an unexpected part of the achievement. Two arrived with the help of family members. They were a little fragile from recent surgery to use the transport we provided. They received a big welcome from the group. There was a lovely feel good atmosphere.

One lady used the day as a goal. Her recovery programme was targeted to being fit enough to attend. Her arrival was such good news.

### 49th Newcastle Scout Group

Project:	Marra Camp
Grant amount:	£2,000
Area of benefit:	Newcastle

### Objectives – met

**Objective 1:** In May 2016, at least 50 beavers, cubs and scouts will attend Marra Camp at a discounted rate.

52 beavers, cubs and scouts attended Marra at a discounted rate

**Objective 2:** The £2,000 grant be split proportionally and equally as a subsidy to ensure that all beavers, cubs and scouts pay the same as other members of that section.

The fee for the Beavers was £20 - this was discounted with a subsidy of £10

The fee for the cubs & scouts was £65 - this was discounted with a subsidy of approx £35

Food and transport was then added to the Marra fee

**Objective 3:** A majority of cubs and scouts will report back that they enjoyed the experience and that they are keen to continue and develop as members of the Scouting movement.

We carried out a written survey and also held a discussion session at a meeting a few weeks later.

The actual experience of Marra camp was rated a 100% success as were the fantastic range of activities including the fairground rides, the Wild West experience, the shows, the slides, quad biking, camp fires etc etc.

We didn't quite get 100% for the camp food, sleeping in tents, mud - however you can't please all of the people all of the time!!

Of the 52 beavers, cubs and scouts who attended - 49 of them are still members of our group 8 months later. Of these 3 no longer with us - one has moved on to Explorers because of his age and 2 have left because of unconnected problems. Which means that the camp is contributing to these young people continuing to be members of the movement.

We are now a vibrant, growing group. This is down to my leaders who put on an exciting programme which attracts more young people by word of mouth from young people already taking part. The Marra camp was another great action packed 4 day event which everyone seemed to enjoy immensely (including the adults). This only comes around every 2 years so is not to be missed. Overall there were nearly 2000 children on this camp.

By the time the entry fees had been added to coach travel and food - we would have had to charge over £100 per head for this camp. Your grant allowed us to reduce this significantly across our group as this would have been too expensive for a few families to send their child to. (especially the families with more than one child in our group).

A lot of these young people are doing activities that they would probably not get the chance to do if it wasn't for the Scout Group. Some of them have not camped before and some of the younger ones have not been away from their parents before. These camps give them a chance to experience new situations, new friends and new activities and most will certainly not have attended a camp of this magnitude.

Our camps are now impatiently waited for by our young people and this feeds back into their regular attendance at our usual meeting nights and the range of extra activities that we put on. This all contributes to a feelgood factor with our young people and their parents - the word spreads and more young people want to join us and experience the fun that we have.

Our follow up camp in september attracted 80 young people.

We now have waiting lists for all 3 sections. We now have 100 young people. The waiting lists have got larger since this camp and it is a contributing factor to this increase as the young people spread the word to their friends.

One unintended consequence outside of our group is that we are able to channel some of the extra interest in our group to other west end scout groups - as I run the waiting lists for the city.

Grants like these make a massive difference to West End children's lives - Thank You!











## Some thank you letters



COMMUNITY  
FOUNDATION  
19 OCT 2016

Robert Stewart Memorial Church  
Wingrove Road  
Newcastle upon Tyne  
NE4 9BU

Advisors  
Muckle LLP Grassroots Fund  
c/o Community Foundation  
Philanthropy House  
Woodbine Road  
Gosforth  
Newcastle upon Tyne  
NE3 1DD

Dear Sirs

I am writing to you to thank you for your generous grant to the 49<sup>th</sup> Newcastle Scout Group (Ref 170607).

We are extremely grateful for this grant towards camping equipment for our Scout Group. Our current tables and chairs are showing their age and need replacing and this will go a long way to helping us with that.

All of our Beavers, Cubs, Scouts and Young Leaders will benefit from this.

Once again – Thank you

Regards



Tony Stephenson  
Group Scout Leader  
49<sup>th</sup> Newcastle Scout Group  
tony@49thnewcastle.org.uk

Registered Charity No. 1127149  
Registered in England No. 6615281  
Patron: His Grace The Duke of Northumberland

COMMUNITY  
FOUNDATION  
02 SEP 2016

  
**Bailiffgate**  
MUSEUM GALLERY

14 Bailiffgate | Alnwick | Northumberland | NE66 1LX  
t: 01665 605847 | e: ask@bailiffgatemuseum.co.uk

Mr Jon Goodwin  
Philanthropy House  
Woodbine Road  
Gosforth  
Newcastle upon Tyne  
NE3 1DD

1<sup>st</sup> September 2016

Dear Mr Goodwin,

On behalf of the trustees and volunteers of Bailiffgate Museum I would like to thank the trustees of the Muckle LLP Fund for the grant they have made to our education work here in the museum. We believe strongly in engaging young people, from the earliest age, with their heritage and your generous donation will allow us to greatly improve our services. Our education volunteers are a very committed group and would be delighted to talk to your trustees about their work or welcome them to the museum to see their work in action.

Once again, many, many thanks for your support. It is much appreciated.

Yours sincerely,



Mal Graham  
Chair of Trustees

[www.bailiffgatemuseum.co.uk](http://www.bailiffgatemuseum.co.uk)





9 December 2016

Muckle LLP Fund  
c/o Community Foundation  
Philanthropy House  
Woodbine Road  
Gosforth  
Newcastle upon Tyne  
NE3 1DD

Dementia Care  
The Bradbury Centre  
Darrell Street  
Brunswick Village  
Newcastle upon Tyne  
NE13 7DS

Tel: 0191 217 1323  
Fax: 0191 236 5778  
Email: info@dementiacare.org.uk  
Web: dementiacare.org.uk  
Facebook: dementiacarene  
Twitter: @DementiacareNE

Registered Charity No. 1045517  
Company Number No. 2980817

Dear sirs

**Re: donation towards Respite Service running costs**

On behalf of everyone at Dementia Care, please accept our thanks for the kind donation of £1,000 from the Muckle LLP Fund towards the running costs of our Residential Respite Centre.

This provides a vital service for people with dementia and their families, often at a time of crisis when family carers simply cannot cope and need a break to recharge their batteries.

It is important that we are here for people at such a time and that cost is not a barrier to them using the service. Your donation will cover the costs of one room in the centre for a whole month over the winter.

Thank you again for your support.

Yours faithfully

DAVID STEVENS FCA  
Chief Executive  
0191 217 3309  
dave@dementiacare.org.uk

COMMUNITY FOUNDATION  
12 DEC 2016

## Muckle LLP Fund

Gateshead Fell Cricket Club would like to thank the Muckle LLP Fund for their generous donation of £1200, which has made possible much needed repairs to the outfield cutter. The machine is vital to the upkeep of the ground, which provides a year round multi-use sports facility for all sections of the community.

171169

14 November 2016

Our ref: C/50859/215445

Mr Jon Goodwin  
Community Foundation Northumberland  
Philanthropy House  
Woodbine Road  
Gosforth  
NEWCASTLE UPON TYNE  
NE3 1DD

Dear Mr Goodwin

Thank you the donation of £1188.00 from the Muckle LLP Fund to Jigsaw, Cumbria's Children's Hospice. We are delighted that the Muckle LLP Fund has chosen to support us by funding a new bed in Jigsaw.

Jigsaw costs around £800,000 to run each year. It is due to the support of many people, people like you, that we can provide the care now and in the years to come at Cumbria's Children's Hospice.

Your special gift will help us to create lasting memories for our children, young adults, families and carers. Not only that, you are helping us support those that we care for throughout our county.

I know that all our children will have big smiles on their faces knowing that so many people care and support Jigsaw, so thanks again for making those smiles possible.

Yours sincerely



**Chris Bray**  
Head of Marketing & Income Generation

*working together with communities*



COMMUNITY FOUNDATION  
18 MAY 2016

Jon Goodwin  
Community Foundation  
Philanthropy House  
Gosforth  
Newcastle upon Tyne  
NE3 1DD

Our ref: Donation from Muckle LLP  
Your ref: Reviving the Heart of the West End  
Date: Monday 16 May 2016

Dear Jon

## Muckle LLP Fund

On behalf of the Board of Trustees at Reviving the Heart of the West End, we would like you to pass on this letter of thanks to Hugh Welch at Muckle LLP for the very kind gesture of a donation of £500.00 received on 13.5.2016.

Their support is very much appreciated and we are delighted to be able to continue our inspirational work providing enterprise, education and training opportunities in Newcastle; and, particularly across the west end of the city.

The donation will be put towards our Business Sparks programme, supporting young people from the West End of Newcastle to realise their entrepreneurial ambitions. The programme provides advice, support and crucial resources to young people considering starting their own business or considering self-employment.

Thank you again for this fantastic support for our work at Reviving the Heart of the West End.

With kind regards

Alexandra Johnson  
Chief Executive

John Buddle Work Village BuddleHouse

John Buddle Work Village & Buddle House. Developed and managed by RHWE Ltd.  
Company no 3359861 Charity no 1093668



Locality - Communities  
ambitious for change



UK Business Incubation  
Association (UKBI)



North East Chamber of Commerce

John Buddle Work Village  
Buddle Road Newcastle upon Tyne NE4 8AW

T 0191 226 7300 F 0191 226 7301  
E info@rhwe.org W www.rhwe.org

# St Cuthberts Care

Patrons: Lady Elsie Robson • Lainya & Alan Shearer • Ant & Dec • Mike Browne

Mr J Goodwin  
Community Foundation  
Philanthropy House  
Woodbine Road  
Gosforth  
Newcastle upon Tyne  
NE3 1DD

24 August 2016

COMMUNITY  
FOUNDATION  
25 AUG 2016

Dear Mr Goodwin

## Grant for the Alan Shearer Centre Garden from Muckles LLP Fund

I am writing to confirm the receipt of the £1200.00 grant given to St Cuthberts Care towards the refurbishment of the Alan Shearer Centre Garden.

This money is very gratefully received and will help us to develop the garden further and enhance the sensory experience for the Centre's hydrotherapy pool users and those using the garden.

Please pass on our thanks to the advisors of the Muckle LLP Fund along with an invitation for them to visit the Alan Shearer Centre once the work has taken place to see how their support has benefited our members.

Yours sincerely



Nicholas Gilbert  
Director of Finance

St Cuthberts Care is a charity established by the Catholic Church that works for the common good  
St Cuthberts House • West Road • Newcastle upon Tyne • NE15 7PY  
Telephone : 0191 228 0111 • Fax: 0191 228 0177 • Email: enquiries@stcuthbertscare.org.uk  
Company Limited by Guarantee Company Registration No 1645917 Registered Charity No 512912

[www.stcuthbertscare.org.uk](http://www.stcuthbertscare.org.uk)



171109

JG

# tyneside women's health

COMMUNITY FOUNDATION  
09 NOV 2016

The Advisors for the Muckle LLP Fund  
C/o Community Foundation for Tyne & Wear and Northumberland  
Philanthropy House  
Woodbine Road  
Gosforth  
Newcastle upon Tyne  
NE3 1DD

Friday 4<sup>th</sup> November 2016

Dear Advisors for the Muckle LLP Fund

On behalf of Tyneside Women's Health, I wish to express our sincere gratitude for the award made to us by the Muckle LLP Fund of £949.40.

The grant will be used towards the cost of delivering our Positive Notes Singing Group for the benefit of women who suffer from mental health issues. The grant will be used to support outreach delivery for the group enabling them to reach a wider audience. We have already begun to plan these sessions with a Dementia Awareness event being held in the New Year.

Once again, sincere thanks.

Kind regards

Elaine Slater

Chief Executive Officer

Head Office, 30 Half Moon Lane, Gateshead, NE8 2AN  
Telephone: 0191 477 7898  
e-mail: [enquiries@tynesidewomenshealth.org.uk](mailto:enquiries@tynesidewomenshealth.org.uk)  
Web: [www.tynesidewomenshealth.org.uk](http://www.tynesidewomenshealth.org.uk)  
Registered Charity Number 1126648  
Registered Company Number 06702528







### Wor Hoose Community Project

Muckle LLP Grassroots Fund  
c/o Community Foundation  
Philanthropy House  
Woodbine Road  
Gosforth  
Newcastle upon Tyne  
NE3 1DD

13 October 2016

**For attention of Muckle LLP Grassroots Fund Trustees,**

**Grant Ref: 170685**

I am writing on behalf of everyone at Wor Hoose to say a big thankyou to you all!

We are thrilled about it!!

This grant will make a big difference to the families who will access the group as many of them do not attend any other preschool activities. We already have had requests from both grandparents who are in acting as parents to children under the ages of 5, and young parents asking us to run a weekly toddler group, so we are aware it is very much needed in this area

I find enclosed our completed acceptance form, we look forward to keeping you informed of our progress.

Yours sincerely,

*Liz Coates*

Liz Coates  
Project Coordinator

Wor Hoose Community Project, 31-33 Hexham Avenue, Walker, Newcastle upon Tyne, NE6 3AL.

Tel: 0191 2872885. Registered Charity Number: 1128032









**Community Foundation** serving  
Tyne & Wear and Northumberland  
Philanthropy House,  
Woodbine Road, Gosforth  
Newcastle upon Tyne, NE3 1DD

T: 0191 222 0945

F: 0191 284 8413

E: [general@communityfoundation.org.uk](mailto:general@communityfoundation.org.uk)

[www.communityfoundation.org.uk](http://www.communityfoundation.org.uk)

T: @CFTyneWearNland

F: CommunityFoundationTyneWearNorthumberland



Registered charity number: 700510

Limited company number: 2273708